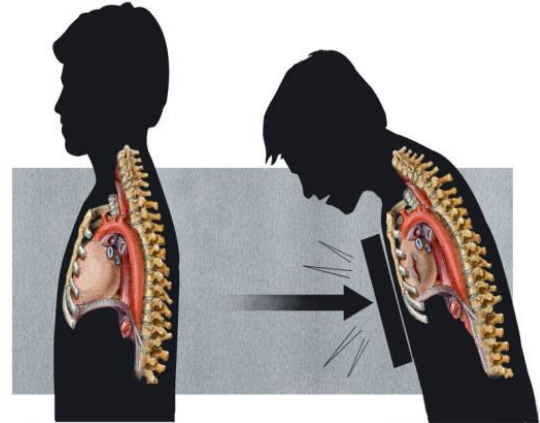


Chest Trauma Management Lecture

Mechanism of Injury session Description

The purpose of this presentation is to provide the provider with the information necessary to determine the mechanism of injury and understand how this impacts the care of the trauma patient. Lecture presentation will be used to provide the participants with an overview of mechanism of injury and the injuries that trauma patients endure relative to the mechanism.

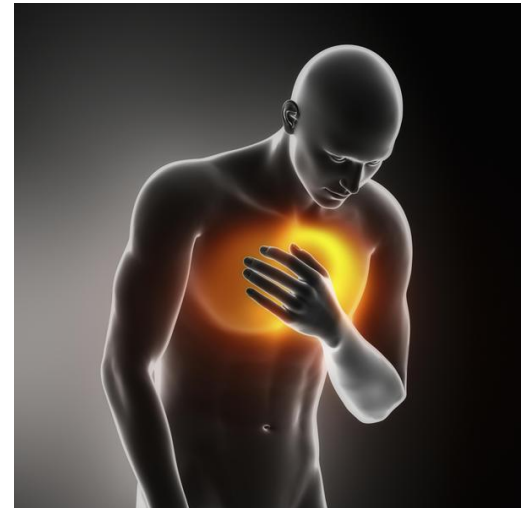


Purpose:

- To provide the trauma care provider with the information necessary to assess, resuscitate and and/or assist with lifesaving interventions when applicable. Lecture presentation will be used to provide the participants with an overview of the "gold standard" measure used to initially assess and manage the trauma patient and the radiographic studies involved in the process.
- To provide the trauma care provider with the information necessary to understand the pathophysiology of shock and how it impacts the trauma patient. Lecture presentation will be used to provide participants with an overview of the pathophysiology of shock, various types/classifications of shock and treatment modalities for the trauma patient.
- To provide the trauma care provider with the information necessary to assess the chest, identify injuries and to assist with procedures and lifesaving techniques throughout resuscitation. Lecture presentation will be used to provide participants with an overview of chest injuries, radiographic studies/procedures used to diagnose injury and methods of treatment.

Objectives:

- Understand the effect of injury on society.
- Describe the risk for injury.
- Understand how knowledge of the mechanism of injury assists in patient evaluation.
- Compare blunt trauma injury patterns to penetrating trauma injuries.
- Describe injury patterns related to various mechanisms of injury.
- Initial Assessment and Management Course Description.
- Understand the priority of the primary survey in the initial assessment of the trauma patient.
- Discuss the systematic approach to identifying and treating injury in the trauma patient.
- Differentiate between airway interventions and ability to choose the appropriate method due to a trauma patient's condition.
- Identify warming measures during the initial assessment.
- Describe a head to toe assessment.
- Define shock.
- Discuss types of shock.
- Describe the four classes of shock and associated clinical signs and symptoms.
- Recognize clinical indicators for endpoints of resuscitation.
- Identify shock categories and their various presentations in the trauma patient.
- Explain the importance of "mechanism of injury" related to thoracic trauma.
- Identify treatments for thoracic injuries.
- Discuss the nursing management of patients with thoracic injuries.
- Discuss radiographic measures to diagnose thoracic injury.
- Develop a plan of care for the patient experiencing a thoracic injury.



Who should attend?

- Medical Students
- Nurses
- Allied Health Staff